

SINK SELECTION SHEET

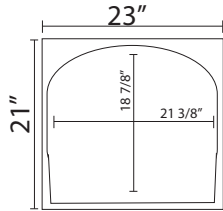
JOB NAME:

(Circle and Initial sink selected)

16 GAUGE STAINLESS STEEL /10% NICKEL

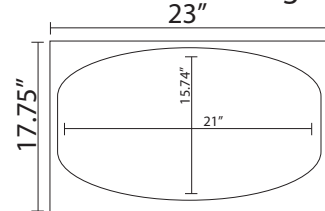
PRO-MAT *WenthWorth-Craftsmen Series*

U104-D/Bowl



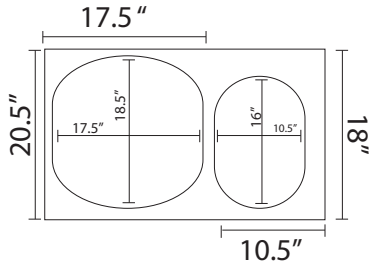
★ 9" deep
★ GRID-G104 **\$200**

U105-Single



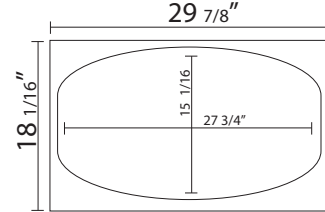
★ 9" deep
★ GRID-G105 **\$200**

U103-Bowl and 1/2



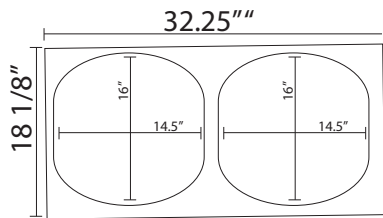
★ Big bowl 9" deep...small bowl 7" deep
★ Big bowl grid(G103L)...small bowl grid(G103S)
OPPOSITE AVAILABLE IN THIS MODEL (U103A) **\$400**

3018-Medium Single



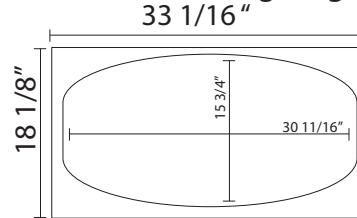
★ 9" deep
★ GRID-G3018 **\$300**

U102-True Double



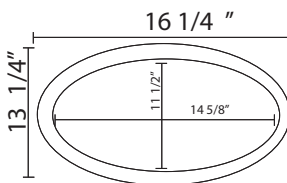
★ Both bowls 9" deep
★ GRID-G102 **\$400**

U301-Big Single

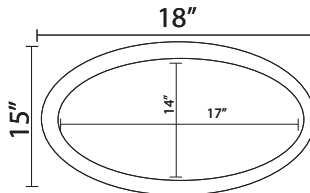


★ U301 is 10.5" deep
★ U301A is 7.5" deep
★ GRID-G301 **\$400**

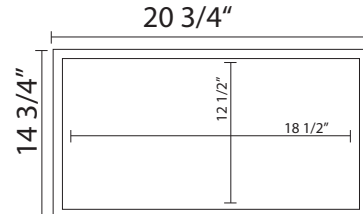
#1512-\$55



#2210-\$55



#1812-\$95



CIRCLE----- White or Bisque